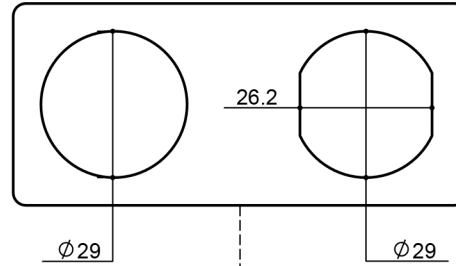


Panel Opening



Electrical

USB Type : 2.0×1、Type-c×1

Number of USB Ports : 2

Nominal Voltage : 12V / 24V DC

Operating Voltage : 8V / 32V DC(max)

Peak Voltage : 36V DC(max)(3~4seconds)

USB Type-1 output :QC3.0(3.6V~12V、Max : 36W)

USB Type-c output :QC4.0(5.0V~20V、Max : 60W)

Current Draw : Quiescent current : 20mA

Life : 5000 operating cycles

Sealing : IP65

Terminals : Copper/nickel plating 1/4" (6.3mm)

Operating Temperature : -40°C ~ +80°C

Panel Opening : $\phi 29.2 \times 26.2$ mm

Over voltage protection : Yes

Over current protection : Yes

Over temperature protection : Yes

Short circuit protection : Yes

Reverse polarity protection : Yes

