

NEW

RANGE HIGHLIGHTS

Monitors:

- Charge/discharge amps for two banks
- Capacity remaining in A/h and %
- Battery condition
- Tank fluid level
- Circuit status

Features:

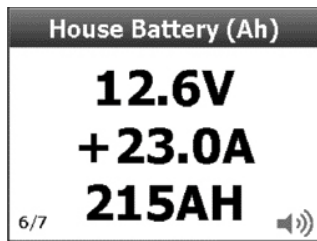
- 8 Generic, user configurable inputs
- Programmable high/low audio/visual alarms for volts, amps and tank levels
- Backlit keypad and dimmable screen
- Can be panel or surface mounted



Specifications:

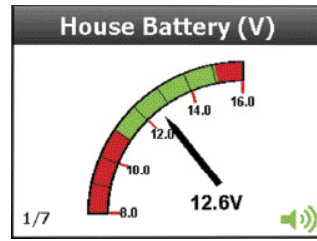
- 2.8" Colour QVGA LCD
- Input voltage 8-32VDC
- Dimensions Width 38mm (1.50") x High 40mm (1.57")
- Backlit keypad

80-600-0021-00 (DCSM including 1x shunt and cable)
80-600-0022-00 (DCSM excluding shunt)



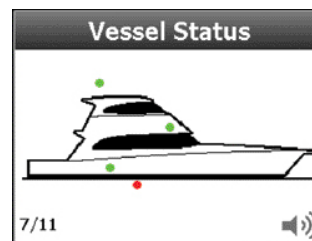
DC Power Meter

- Displays voltages of multiple battery banks (0-32VDC)
- Displays charge and discharge (amps) of 2 battery banks
- Displays battery capacity in amp hours
- High/Low level alarms



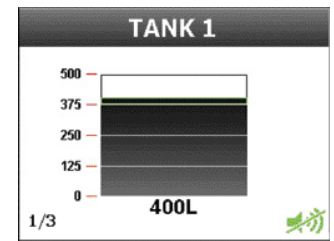
Display Type

- Configure the DCSM to show the data in analogue, digital and graphic form



Circuit Status

- View the status of important circuits (on/off)
- In graphic and numeric form



Tank Level

- View tank level information for multiple tanks in numeric and graphic forms. Resetable when leaving boat

The BEP Digital Monitoring System

Designed and manufactured by BEP, these state of the art full color monitors are made to meet the systems monitoring requirements of today's modern vessel and recreational vehicle. Complex AC and DC electrical installations onboard are becoming more common place.

Additionally the increase in tank monitoring requirements for fuel, fresh, grey and black water, accurate monitoring of these systems is essential. The DCSM and ACSM displays feature clear, extra large type face. This allows for more detailed on-screen information and increased clarity. The screen has backlighting for easy night time viewing.

Installation Cable Kit

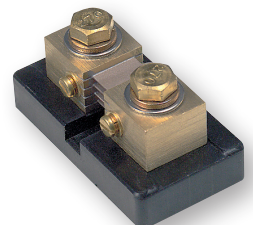
2 core screened cable in
2 lengths pre-terminated.

- 600-DCM-5M 5 m (16.45") cable
- 600-DCM-10M 10 m (32.9") cable



600-DCM-5M

450A / 50 mV shunt supplied
supplied with 80-600-0021-00
83L x 45W x 44H mm
(3.25L x 2.8W x 2.75H in)



LB-450-50