

Scan here
to save a copy

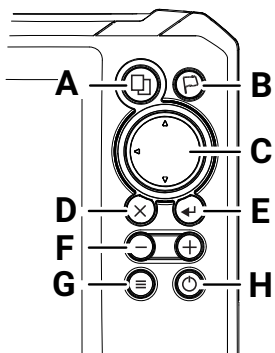


EAGLE EYE™ Quick start guide

This document describes the basic controls of the Lowrance Eagle Eye™ multi-function display (MFD). For the latest version of this document and the full operator manual, visit: www.lowrance.com/downloads/eagle.

→ **Note:** Refer to the enclosed Installation Manual before you turn on the unit.

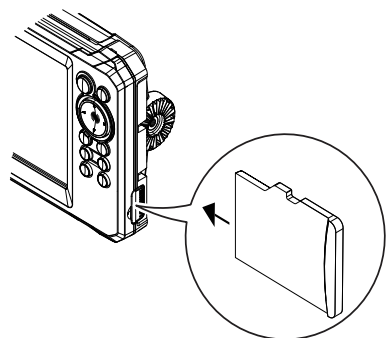
Physical control keys



- A** Pages
 - Press to activate the home screen.
- B** Waypoint
 - Press to open the new waypoint dialog.
 - Press twice to save a waypoint.
 - Press and hold to access the find dialog.
- C** Arrows
 - On full screen pages:
 - Press to position the cursor.
 - Press to pan the image in any direction.
 - On multi-panel pages:
 - Press to select a panel.
 - On menus:
 - Press to navigate.
- D** Exit
 - On a maximized, multi-panel page:
 - Press to return to the multi-panel page.
 - In menus and dialogs:
 - Press to return to the previous menu level and to exit a dialog.
- E** Enter
 - On multi-panel pages:
 - Press to maximize the currently selected panel.
 - In menus and dialogs:
 - Press to confirm a selection.
- F** Zoom
 - Press to zoom the image.
 - Press both keys together to create a crew overboard (MOB) waypoint at your position.
- G** Menu
 - Press to display the menu on full screen pages.
- H** Power
 - Press once to display the **System Controls** dialog.
 - Press and hold to power the unit on /off.
 - Repeat short presses to cycle the backlight brightness.

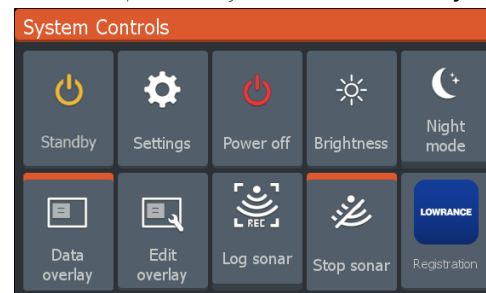
Card reader

Carefully slide a microSD® into the card reader slot on the side of the device. To remove the microSD® card, gently pull the card.

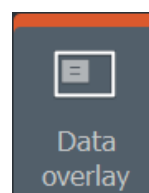


System controls

Press the power key once to view the **System Controls** dialog.



→ **Note:** The content of the **System Controls** dialog depends on connected equipment and the active panel.



An orange bar displays above active options in the **System Controls** dialog.

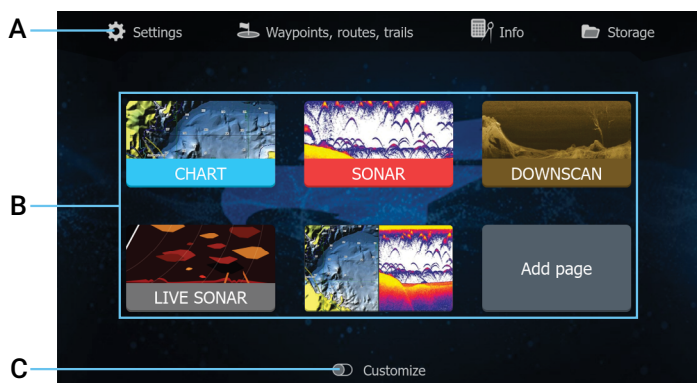
Display illumination

Set brightness and select day/night mode from the **System Controls** dialog.

Cycle backlight brightness levels by repeatedly pressing the power key.

Home screen

Press the pages key to view the home screen.



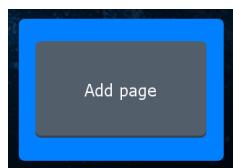
- A Tools — Select to access dialogs used for carrying out a task or for browsing stored information.
- B Application icons — Select to display an application.
- C Customize — Activate customize mode to modify or delete custom pages.

Pages

Select and application icon on the home screen to view the application page.

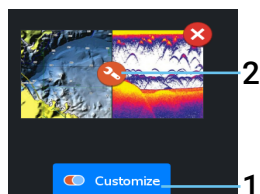
Custom pages

The system has one custom page predefined by default, and you can also create your own.



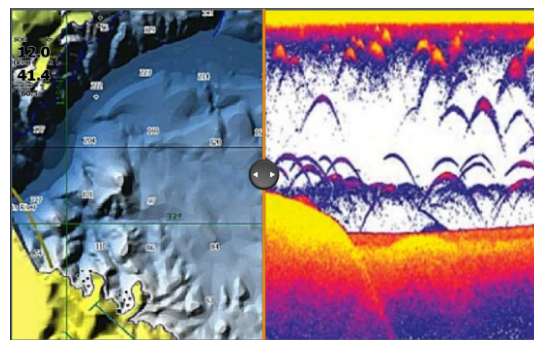
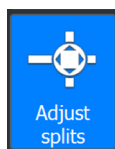
Select the **Add Page** icon to create a custom page.

- 1 Switch ON **Customize** to edit existing custom pages.
- 2 Select the custom page to edit.



Multi-panel pages

- The active panel has an orange border.
- Press the arrow keys to change active panels.
- Press the enter key to maximize the active panel. Press the exit key to return to the multi-panel page.
- Select **Adjust splits** in the **System Controls** dialog, and use the arrow keys to change the panel size. Press the menu or enter key to confirm.

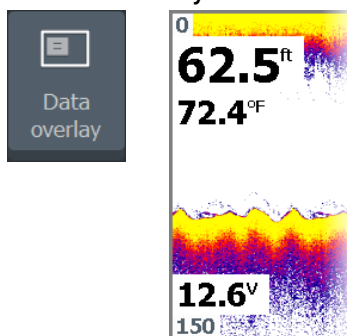


→ **Note:** The panel menu is available on maximized panels.

Data overlay

You can display information as a data overlay on chart and sonar pages. The information is set individually for each default and custom page.

Turn **Data overlay** ON or OFF from the **System Controls** dialog.



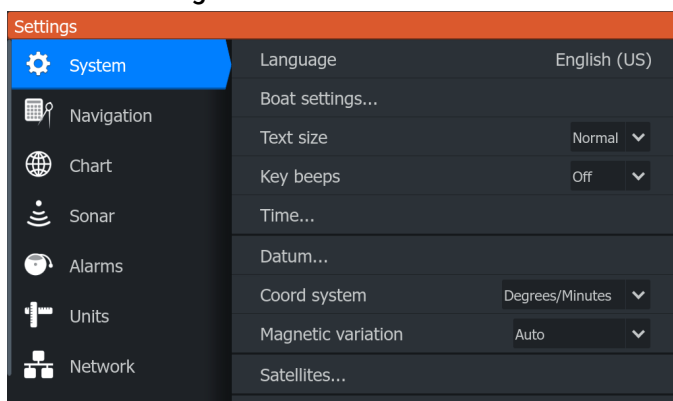
To change the data overlay position or information:

- 1 Select the **Edit overlay** option in the **System Controls** dialog to activate edit mode.
- 2 Press the menu key to display edit options.
- 3 Press the exit key to save your changes.

Settings

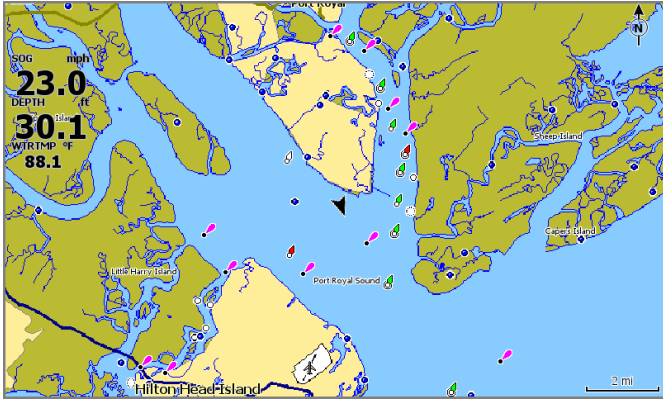
There are two ways to view the **Settings** screen:

- Select **Settings** on the **System Controls** dialog, or
- Select **Settings** on the home screen.



Chart

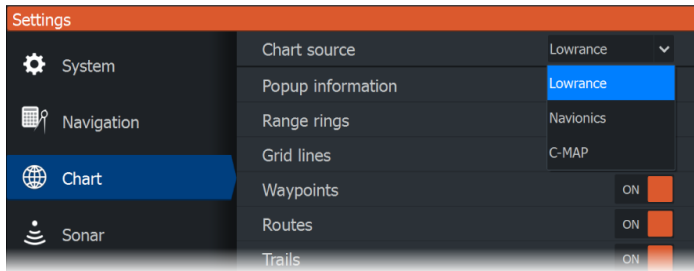
Use the chart application to navigate to a waypoint, create a route, or track your current course.



- Use the zoom and arrow keys to adjust the chart scale and location.
- Position the cursor and press the enter key to select a chart item and activate the detailed information dialog.

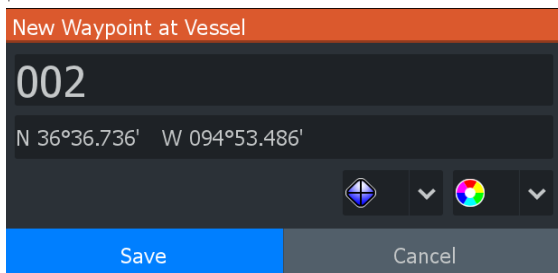
Chart source

Change the chart source if a chart card is inserted.

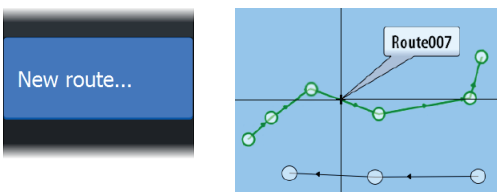


Waypoints

Press the waypoint key to save a waypoint. By default, the waypoint is placed at the vessel's current position. With an active cursor, the waypoint is placed at the selected cursor position.



Routes



To create a route:

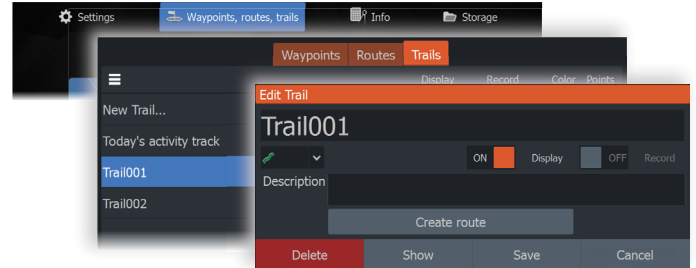
- 1 Activate a full screen chart.
- 2 Press the menu key to activate the panel menu, then select the **New route** option in the menu.
- 3 Use the arrow keys to position the first route point, then press the enter key to confirm the position.
- 4 Repeat step 3 to place additional route points.
- 5 Press the exit key to save the route.

Trails

Your unit automatically tracks and draws the vessel's movement in the chart application. Trails are managed from the **Trails** dialog.

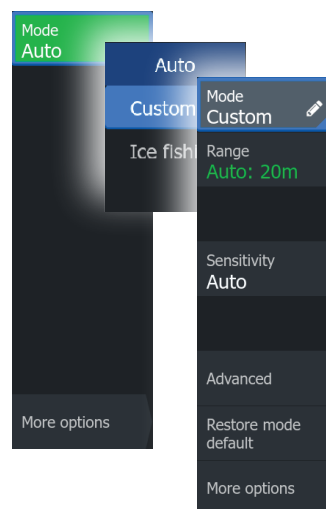
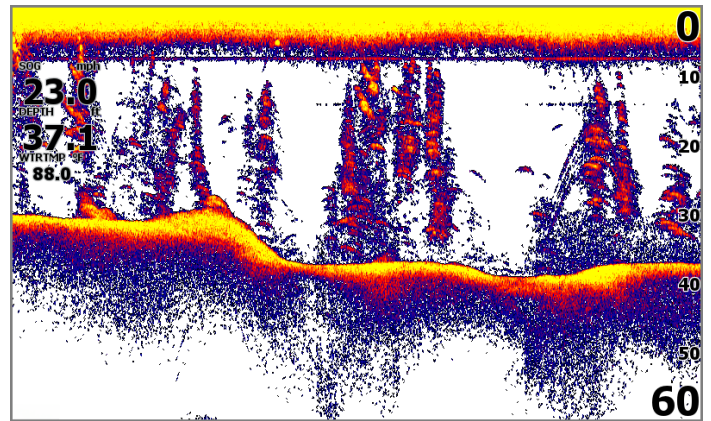
To display the **Trails** dialog:

- 1 Select **Waypoints, Routes, Trails** from the home screen.
- 2 Select the **Trails** tab in the dialog.
- 3 Select the trail you want to edit.



Sonar

The sonar application displays an image of the water and sea floor beneath your vessel, helping you detect fish and examine the structure of the seafloor.



By default, your unit is set to **Auto** mode, and all settings are automated. Select **Auto** in the panel menu and change to **Custom** mode to customize sonar settings.

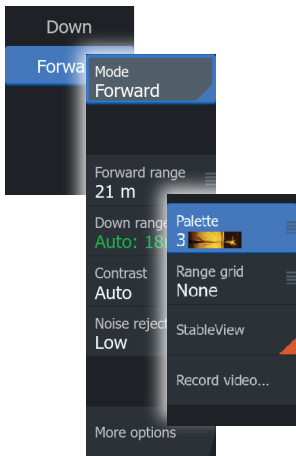
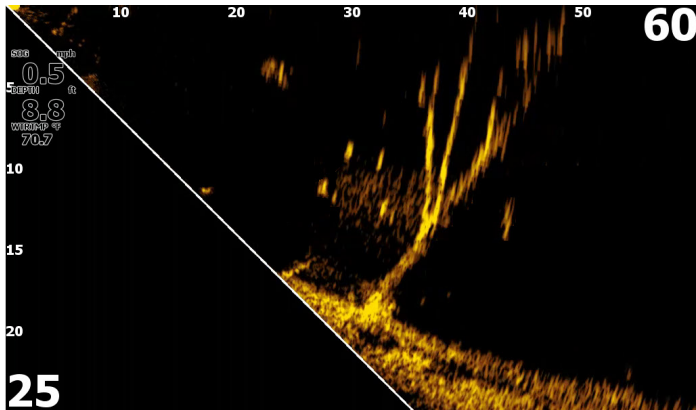
→ **Note:** For the Sonar, Live Sonar, and DownScan applications:

- Use the zoom keys to view different parts of the water column.
- Use the arrow keys to position the cursor and pan the image

Live Sonar

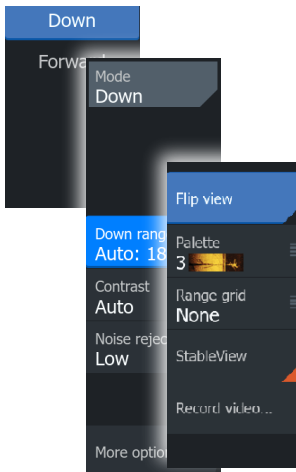
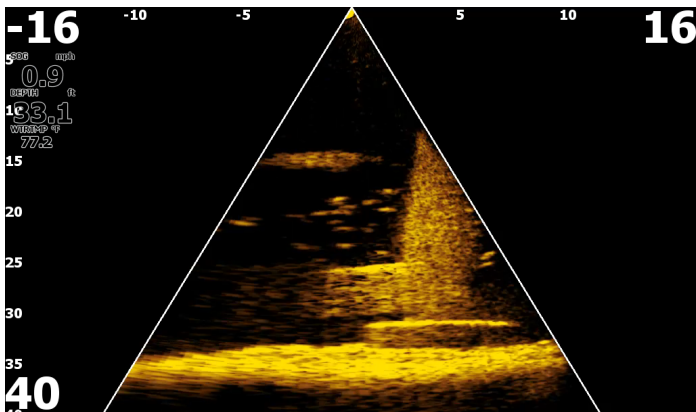
Live Sonar is a real-time view beneath your vessel. You can examine structures, detect fish, and watch fish react to your bait.

Live Sonar Forward



By default, your unit is set to **Auto** mode, and all settings are automated. Select **Forward** in the panel menu to customize live sonar settings.

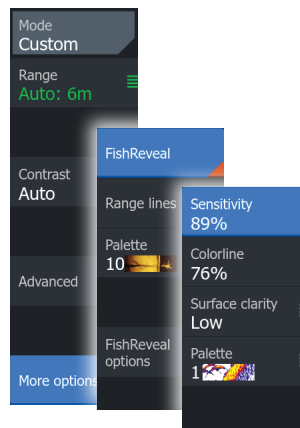
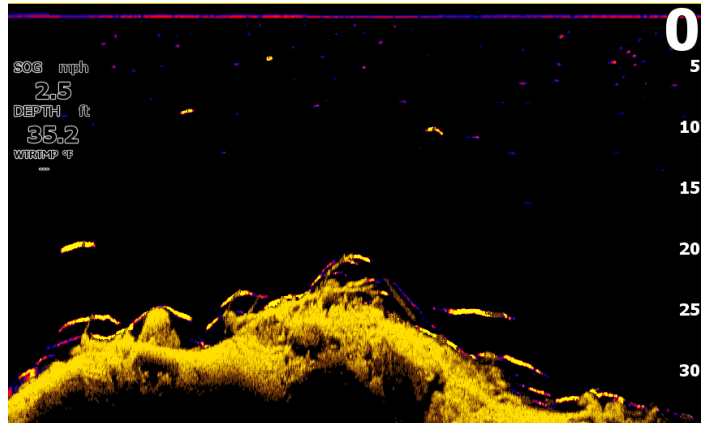
Live Sonar Down



By default, your unit is set to **Auto** mode, and all settings are automated. Select **Down** in the panel menu to customize live sonar settings.

DownScan

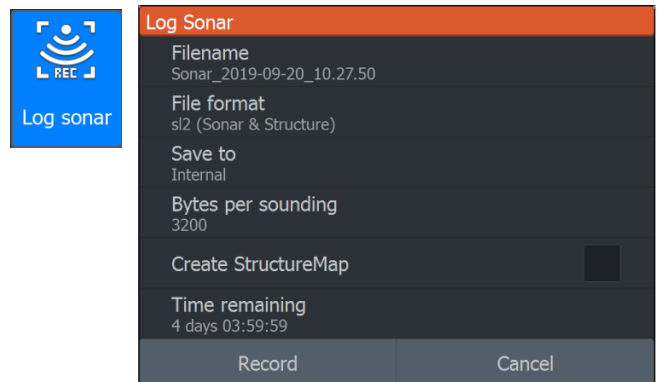
DownScan provides detailed images of structure and fish directly below your vessel.



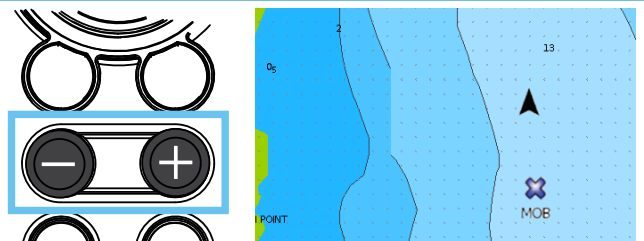
By default, your unit is set to **Auto** mode, and all settings are automated. Select **Auto** in the panel menu and change to **Custom** mode to customize sonar settings.

Log Sonar

Activate the **Log Sonar** dialog from the **System Controls** or **Settings > Sonar** dialogs. Save the sonar log data to internal storage or to a microSD® card.



MOB waypoint



Activate a crew overboard (MOB) waypoint by pressing the + and - keys simultaneously. The display shows navigation information to the MOB waypoint.

© 2024 Navico Group. All Rights Reserved. Navico Group is a division of Brunswick Corporation.

®Reg. U.S. Pat. & Tm. Off, and ™ common law marks.

Visit www.navico.com/intellectual-property to review the global trademark rights and accreditations for Navico Group and other entities.